

National Assessment and Accreditation Council (NAAC)

Student Satisfaction Survey

Key Indicator - 2.7.1 under Criterion II of Teaching – Learning and Evaluation (From Students)

SESSION 2021-22

Guidelines for Students-

NAAC (National Assessment and accreditation council) is conducting a Student Satisfaction Survey regarding Teaching – Learning and Evaluation, which will help to upgrade the quality in higher education. A student will have to respond to all the questions given in the following format with her/his sincere effort and thought. Her/his identity will not be revealed.

Students survey Google form available on below mentioned link

<https://forms.gle/5h8XNsqGit6c8C5M7>

National Assessment and Accreditation Council (NAAC) Student Satisfaction Survey Key Indicator - 2.7.1 Under Criterion II of Teaching – Learning and Evaluation

SESSION 2021-22

[Sign in to Google](#) to save your progress. [Learn more](#)

* Required

Instructions to fill the questionnaire

- All questions should be compulsorily attempted.
- Each question has five responses, choose the most appropriate one.
- The response to the qualitative question no. 21 is student's opportunity to give suggestions or improvements; she/he can also mention weaknesses of the institute here. (Kindly restrict your response to teaching learning process only)

1. How much of the syllabus was covered in the class? *

- 4 – 85 to 100%
- 3 – 70 to 84%
- 2 – 55 to 69%
- 1– 30 to 54%
- 0 –Below 30%



2. How well did the teachers prepare for the classes? *

- 4 – Thoroughly
- 3 – Satisfactorily
- 2 – Poorly
- 1 – Indifferently
- 0 – Won't teach at all

3. How well were the teachers able to communicate? *

- 4 – Always effective
- 3 – Sometimes effective
- 2 – Just satisfactorily
- 1 – Generally ineffective
- 0 – Very poor communication

4. The teacher's approach to teaching can best be described as *

- 4 – Excellent
- 3 – Very good
- 2 – Good
- 1 – Fair
- 0 – Poor



5. Fairness of the internal evaluation process by the teachers. *

- 4 – Always fair
- 3 – Usually fair
- 2 – Sometimes unfair
- 1 – Usually unfair
- 0– Unfair

6. Was your performance in assignments discussed with you? *

- 4 – Every time
- 3 – Usually
- 2 – Occasionally/Sometimes
- 1 – Rarely
- 0– Never

7. The institute takes active interest in promoting internship, student exchange, field visit opportunities for students. *

- 4 – Regularly
- 3 – Often
- 2 – Sometimes
- 1 – Rarely
- 0– Never



8. The teaching and mentoring process in your institution facilitates you in cognitive, social and emotional growth. *

- 4 – Significantly
- 3 – Very well
- 2 – Moderately
- 1 – Marginally
- 0– Not at all

9. The institution provides multiple opportunities to learn and grow *

- 4 – Strongly agree
- 3 – Agree
- 2 – Neutral
- 1 – Disagree
- 0– Strongly disagree

10. Teachers inform you about your expected competencies, course outcomes and programme outcomes *

- 4 – Every time
- 3 – Usually
- 2– Occasionally/Sometimes
- 1 – Rarely
- 0– Never



11. The teachers illustrate the concepts through examples and applications. *

- 4 – Every time
- 3 – Usually
- 2 – Occasionally/Sometimes
- 1 – Rarely
- 0 – Never

12. The teachers identify your strengths and encourage you with providing right level of challenges *

- 4 – Fully
- 3 – Reasonably
- 2 – Partially
- 1 – Slightly
- 0 – Unable to

13. Teachers are able to identify your weaknesses and help you to overcome them *

- 4 – Every time
- 3 – Usually
- 2 – Occasionally/Sometimes
- 1 – Rarely
- 0 – Never



14. The institution makes effort to engage students in the monitoring, review and continuous quality improvement of the teaching learning process. *

- 4 – Strongly agree
- 3 – Agree
- 2 – Neutral
- 1 – Disagree
- 0 – Strongly disagree

15. The institute/ teachers use student centric methods, such as experiential learning, participative learning and problem solving methodologies for enhancing learning experiences *

- 4 – To a great extent
- 3 – Moderate
- 2 – Some what
- 1 – Very little
- 0 – Not at all

16. Teachers encourage you to participate in extracurricular activities. *

- 4 – Strongly agree
- 3 – Agree
- 2 – Neutral
- 1 – Disagree
- 0 – Strongly disagree



17. Your mentor does a necessary follow-up with an assigned task to you. *

- 4 – Every time
- 3 – Usually
- 2 – Occasionally/Sometimes
- 1 – Rarely
- 0 – I don't have a mentor

18. Efforts are made by the institute/ teachers to inculcate soft skills, life skills and employability skills to make you ready for the world of work *

- 4 – To a great extent
- 3 – Moderate
- 2 – Some what
- 1 – Very little
- 0 – Not at all

19. What percentage of teachers use ICT tools such as LCD projector, Multimedia, etc. while teaching. *

- 4 – Above 90%
- 3 – 70 – 89%
- 2 – 50 – 69%
- 1 – 30 – 49%
- 0 – Below 29%



20. The overall quality of teaching-learning process in your institute is very good *

- 4 – Strongly agree
- 3 – Agree
- 2 – Neutral
- 1 – Disagree
- 0 – Strongly disagree

[Back](#)

[Submit](#)

[Clear form](#)

Never submit passwords through Google Forms.

This content is neither created nor endorsed by Google. [Report Abuse](#) - [Terms of Service](#) - [Privacy Policy](#).

Google Forms







S R COLLEGE OF PROFESSIONAL STUDIES

MANAGED BY
PT. DEEN DAYAL UPADHYAY SHIKSHAN TRUST

NAAC ACCREDITED
ISO 9001:2015

STUDENT SATISFACTION SERVEY

Consolidated Report for the Academic Year 2021-22

AVERAGE (TOTAL STUDENTS GIVEN: 360: Total Weightage 5)

Question	Choice 1	Choice 2	Choice 3	Choice 4	Choice 5	Total
Q1	120	80	80	50	30	360
Q2	140	65	85	60	10	360
Q3	135	95	79	40	11	360
Q4	121	128	74	32	5	360
Q5	110	136	71	21	22	360
Q6	115	124	73	30	18	360
Q7	140	125	69	21	5	360
Q8	132	128	72	18	10	360
Q9	102	138	69	35	16	360
Q10	120	126	57	24	33	360
Q11	132	130	65	26	7	360
Q12	110	128	67	27	28	360
Q13	118	136	69	23	14	360
Q14	109	126	70	27	28	360
Q15	135	112	72	21	20	360
Q16	145	116	69	20	10	360
Q17	120	118	78	25	19	360
Q18	120	125	75	26	14	360
Q19	114	135	70	19	22	360
Q20	120	110	80	27	23	360

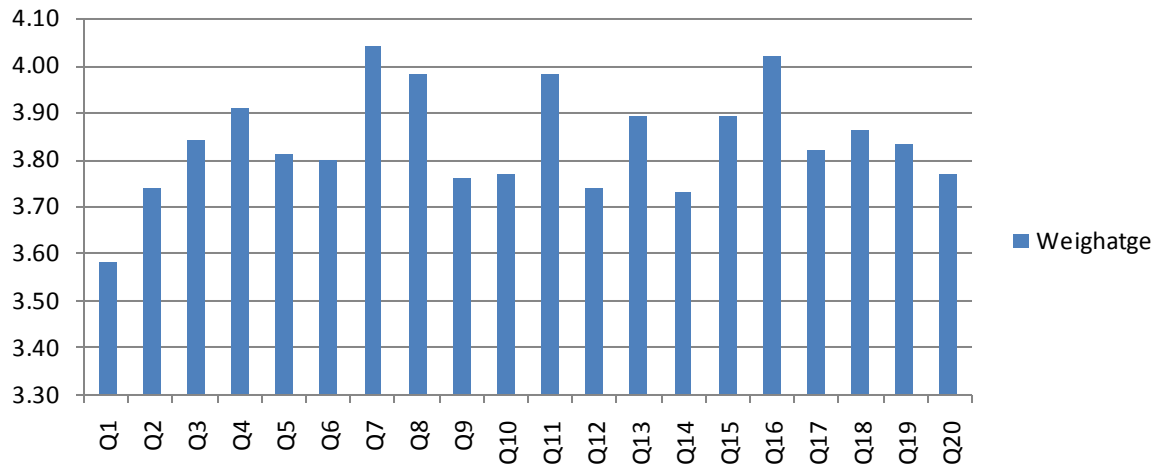
STUDENT SATISFACTION SURVEY

Consolidated Report for the Academic Year 2021-22

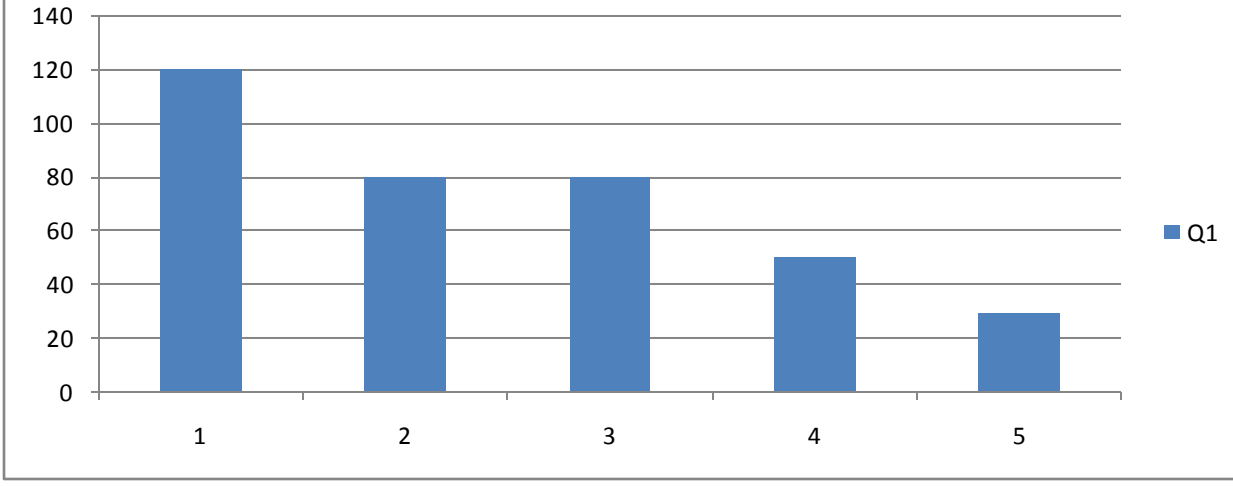
AVERAGE (TOTAL STUDENTS GIVEN: 360: Total Weightage 5)

Question	Weightage
Q1	3.58
Q2	3.74
Q3	3.84
Q4	3.91
Q5	3.81
Q6	3.80
Q7	4.04
Q8	3.98
Q9	3.76
Q10	3.77
Q11	3.98
Q12	3.74
Q13	3.89
Q14	3.73
Q15	3.89
Q16	4.02
Q17	3.82
Q18	3.86
Q19	3.83
Q20	3.77

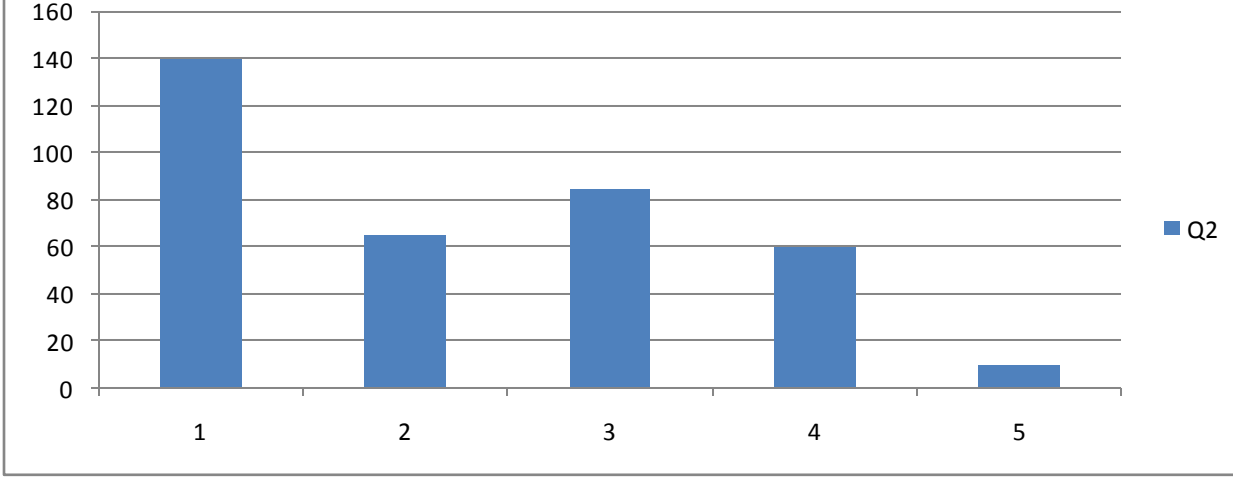
Weighatge



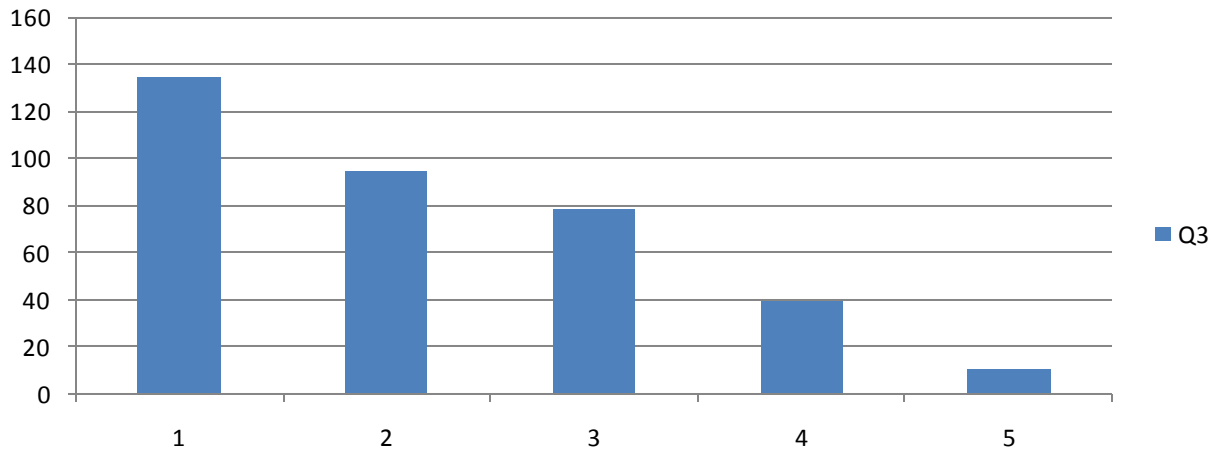
Q1



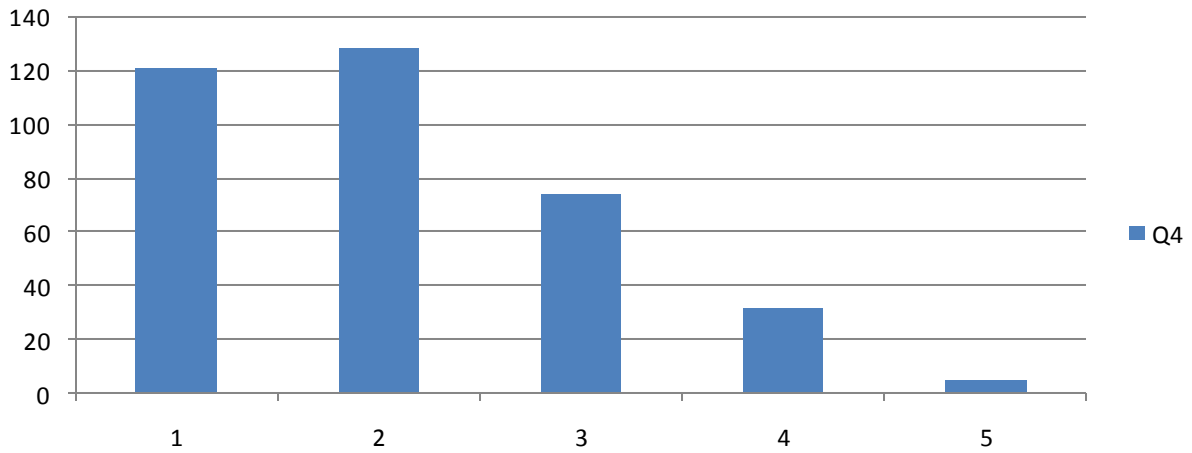
Q2



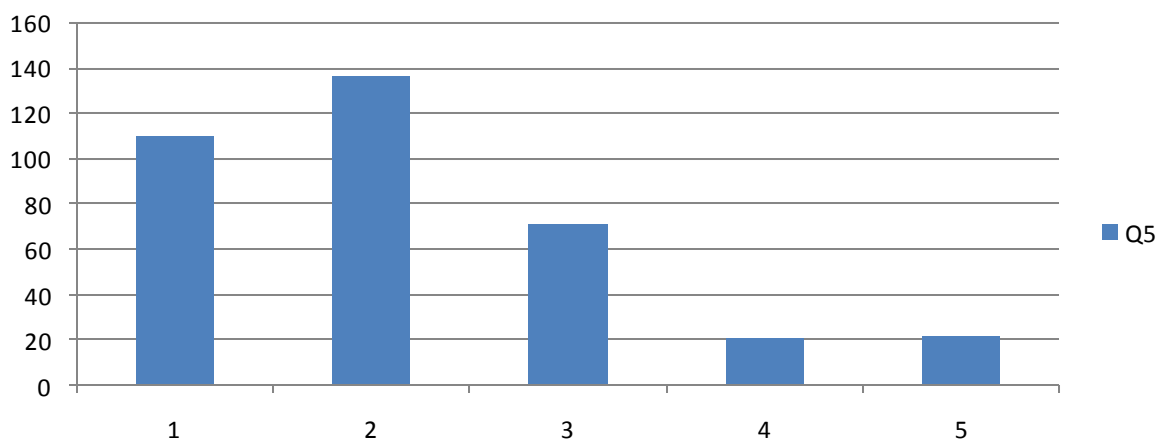
Q3

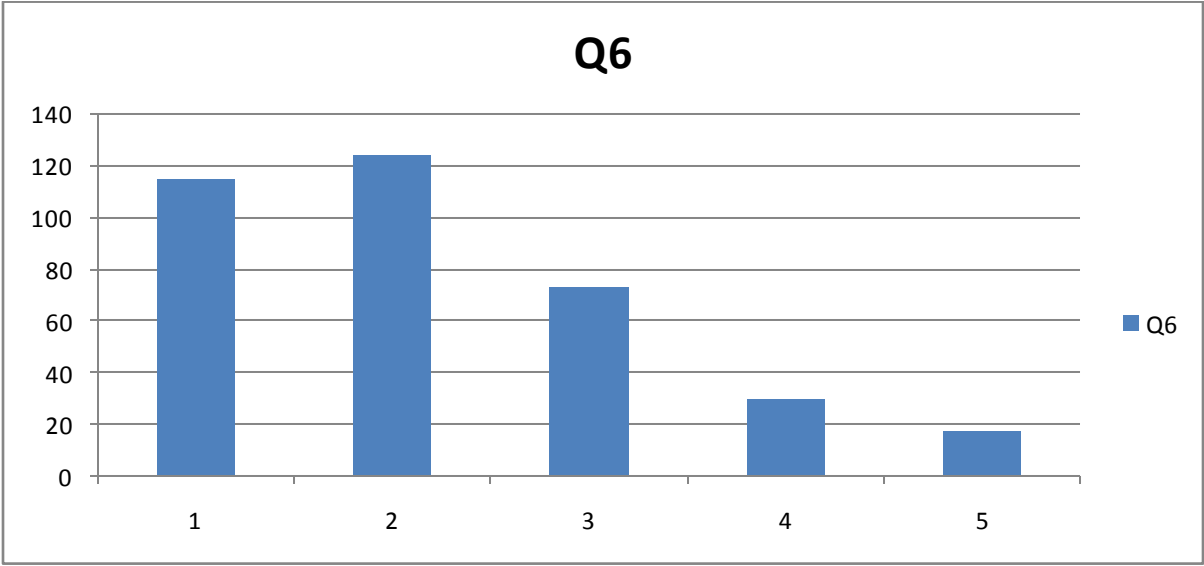


Q4

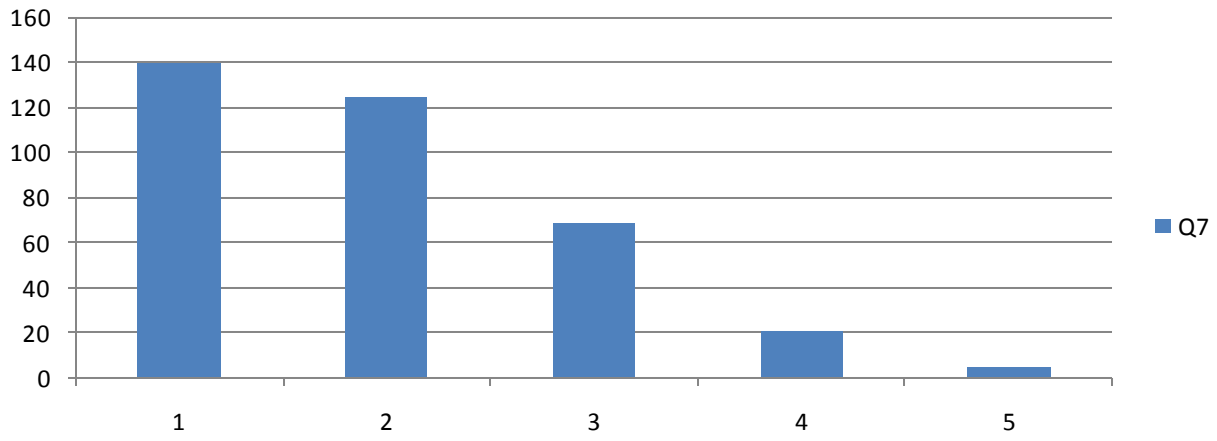


Q5

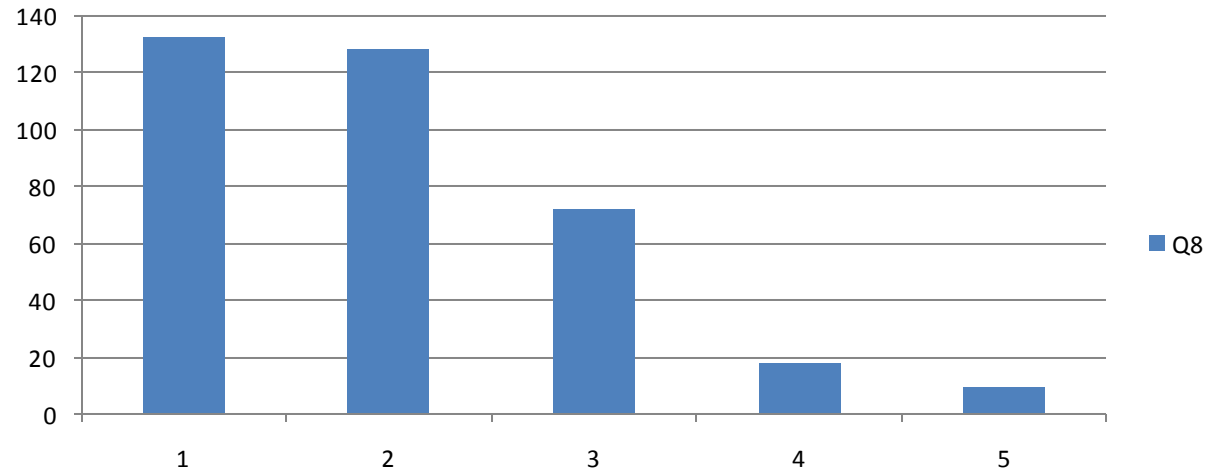


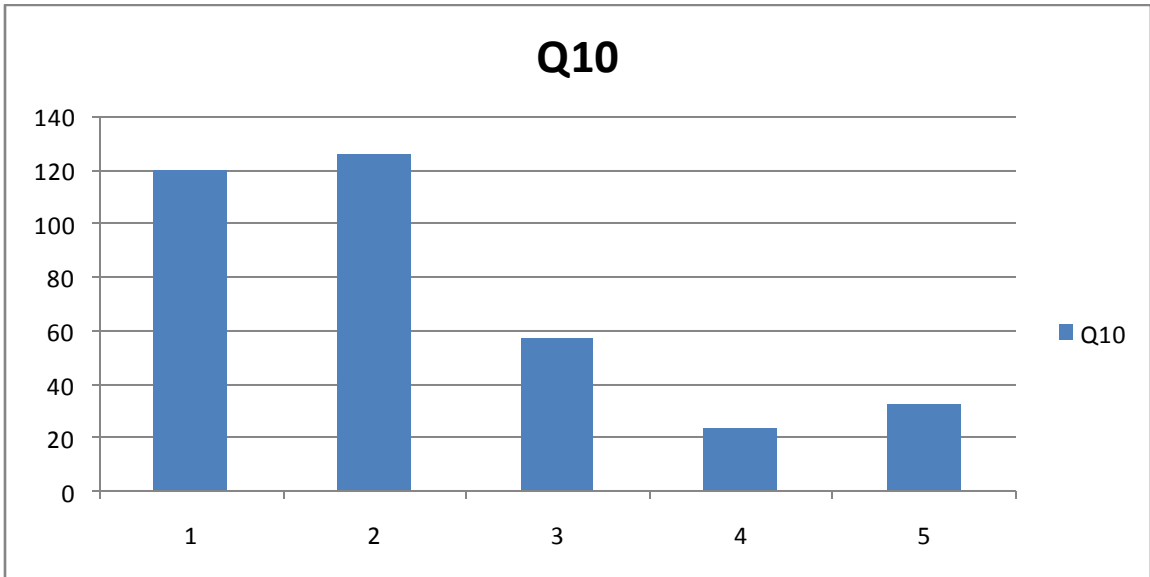
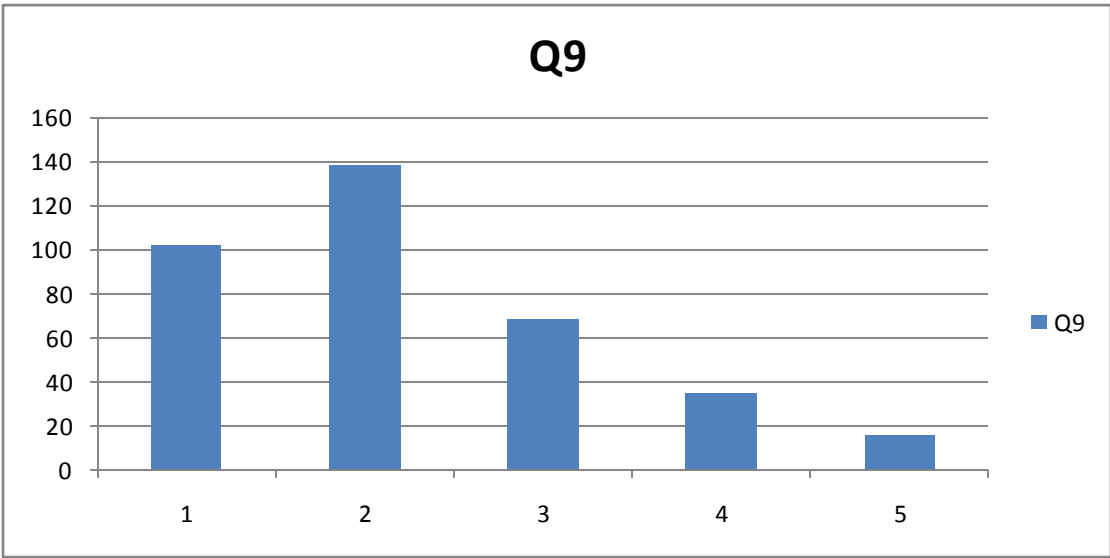


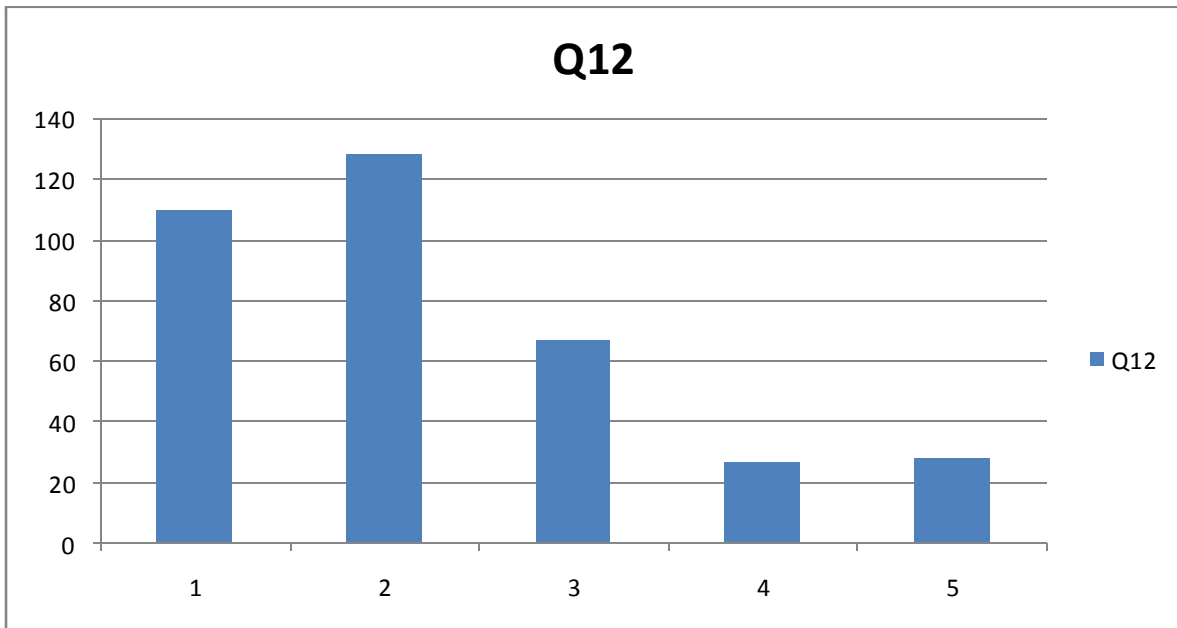
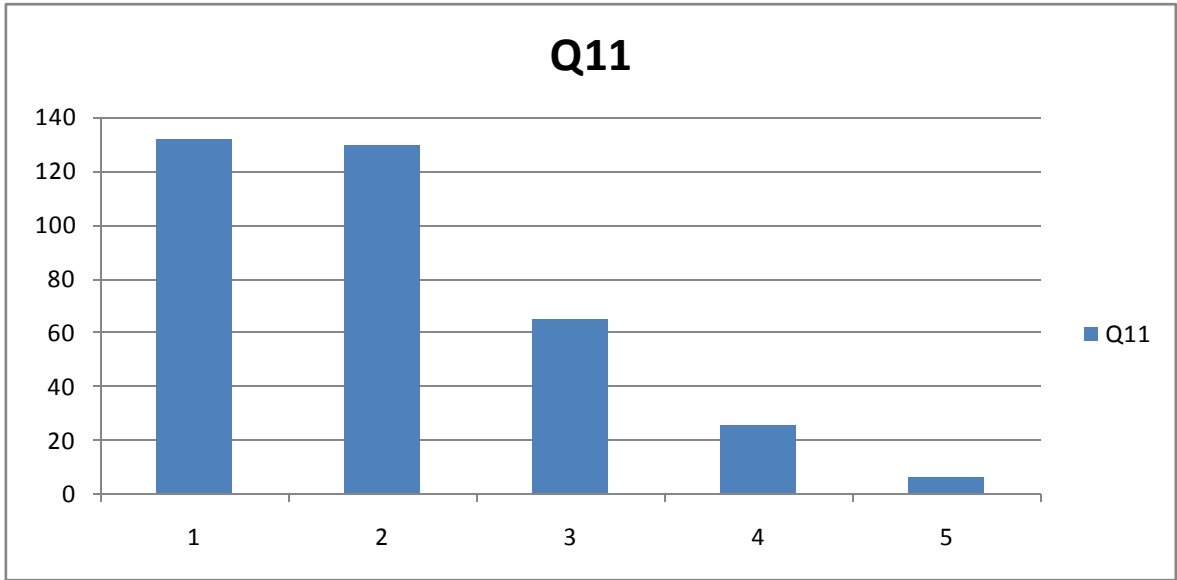
Q7



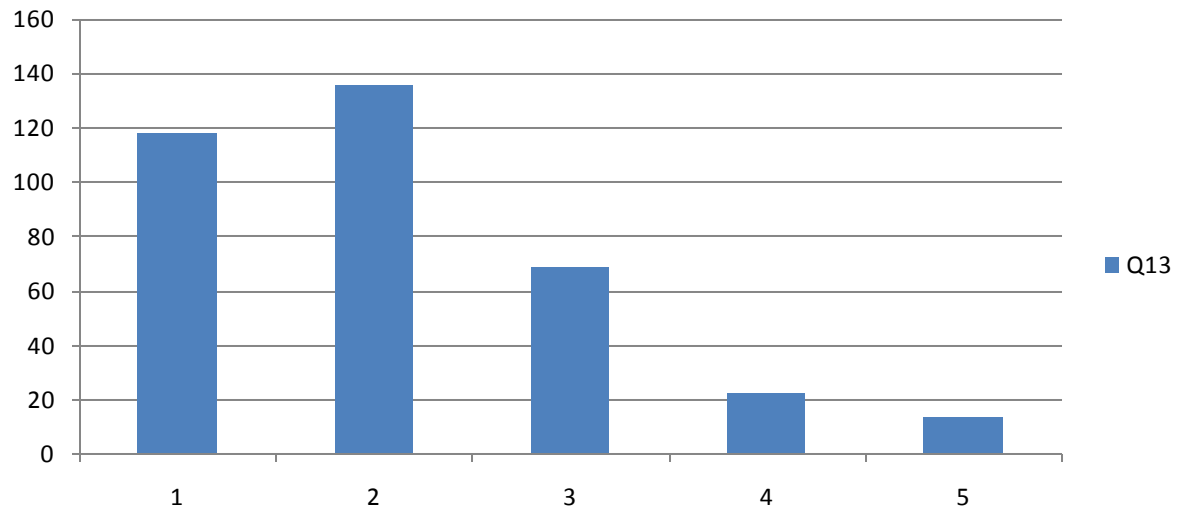
Q8



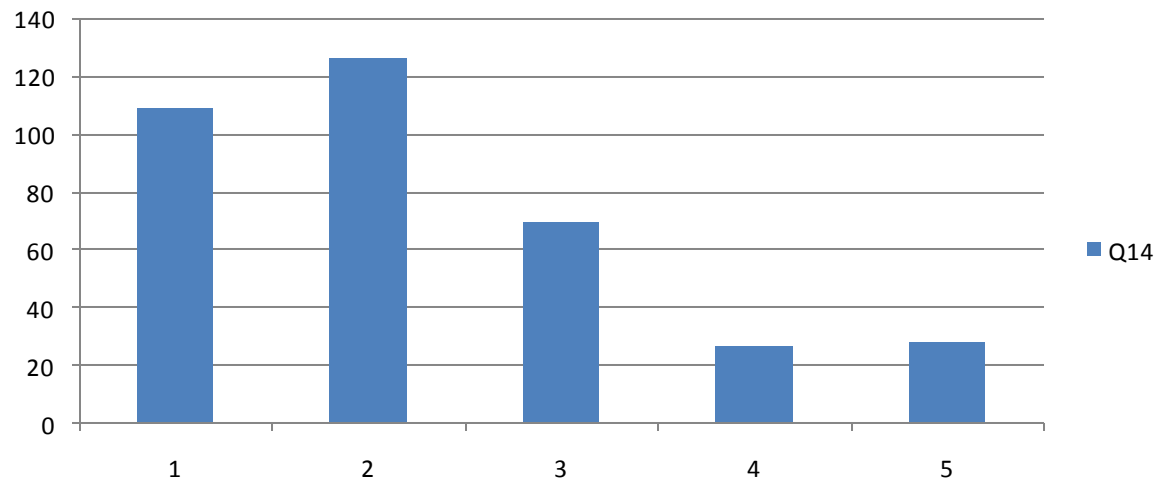




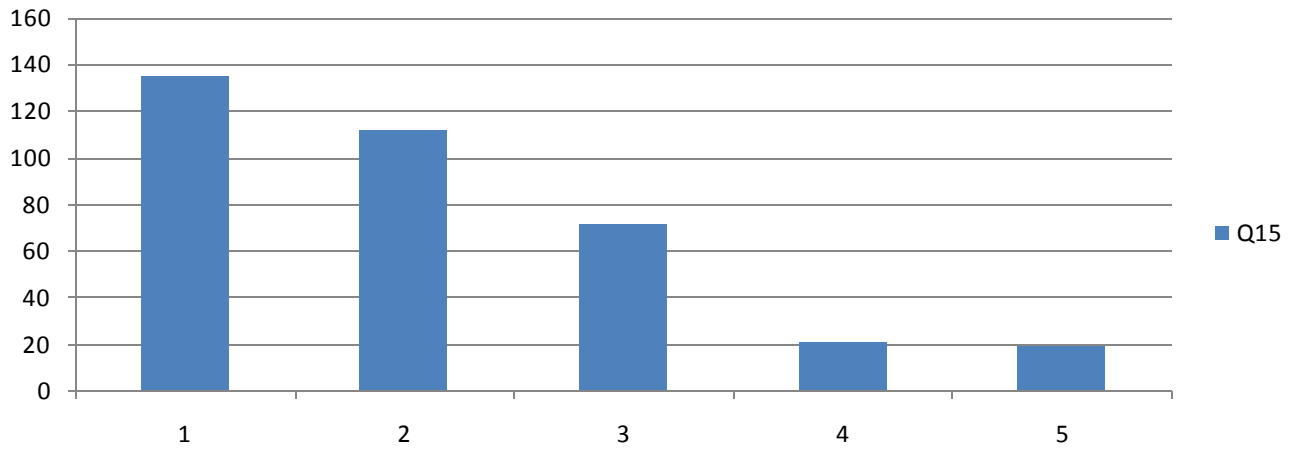
Q13



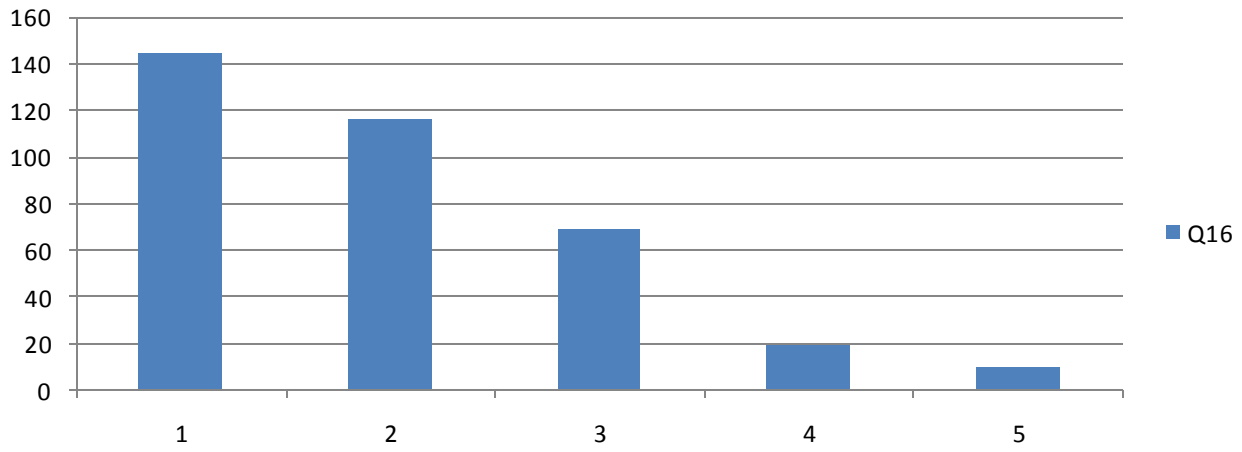
Q14



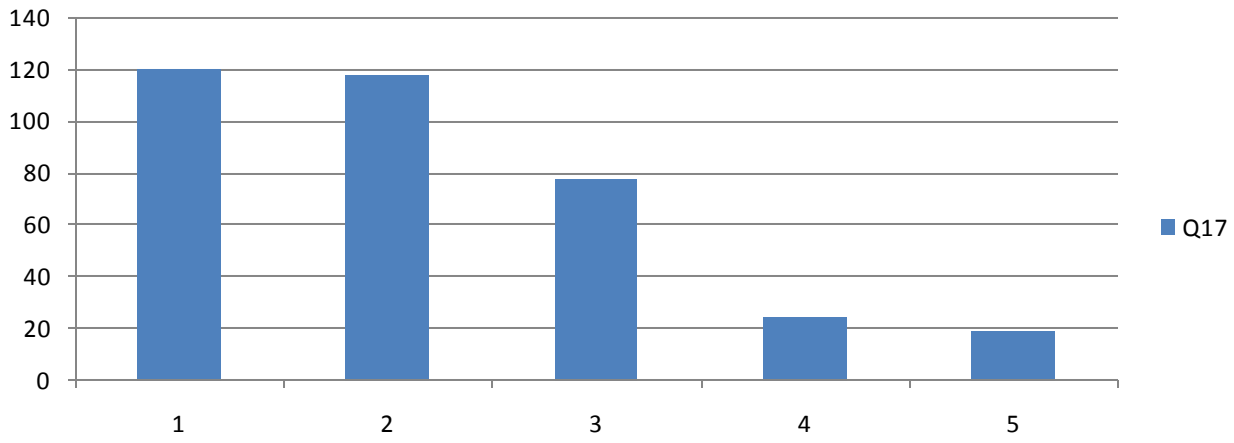
Q15



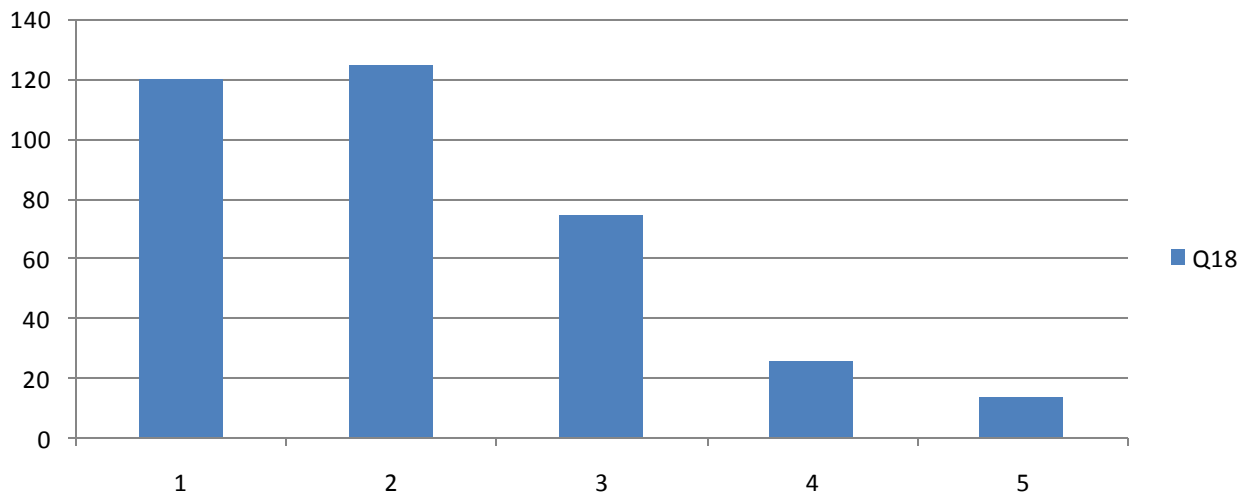
Q16



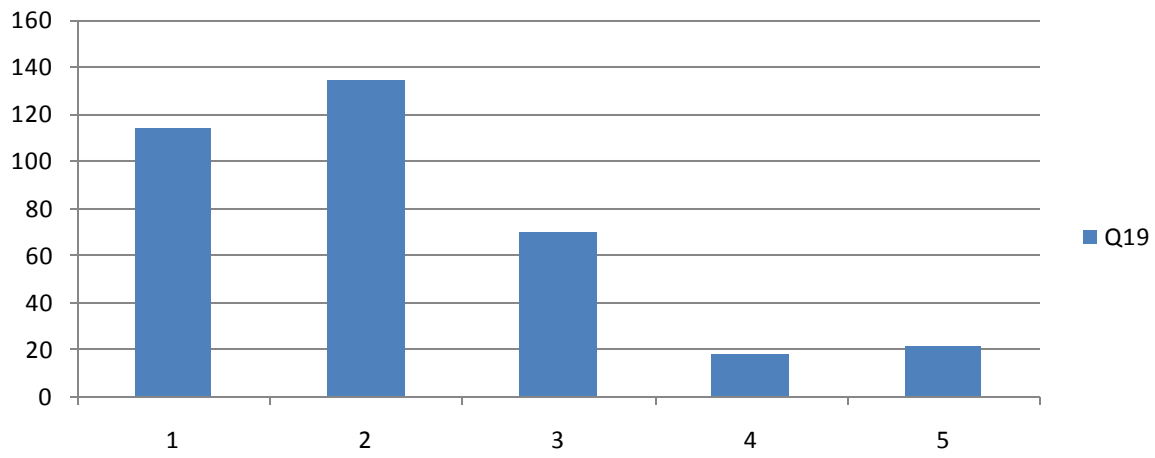
Q17



Q18



Q19



Q20

